

TWO PIECE PLUNGER



Info@kaizenws.com

1-877-369-8886

The Two Piece Plunger is designed for wells that have a higher than normal flow rate and fluid loading problems. Typically the Two Piece Plunger is the first choice in the wells life cycle. It can reduce or even eliminate shut in times while maximizing production. This plunger will make more trips with faster fall times, delivering continuous fluid removal. Adaptable to all standard lubricator designs, requires a trip rod and anvil.

APPLICATION

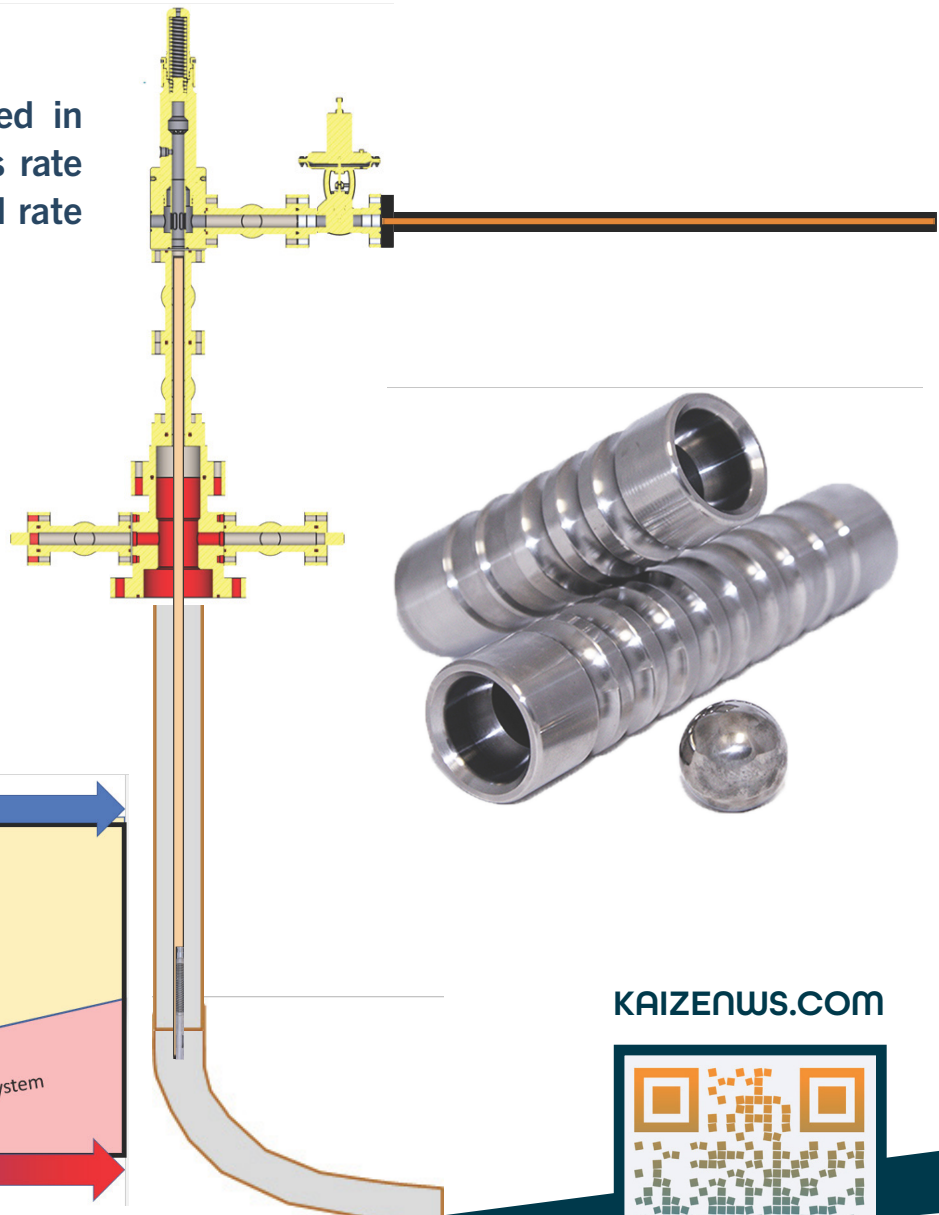
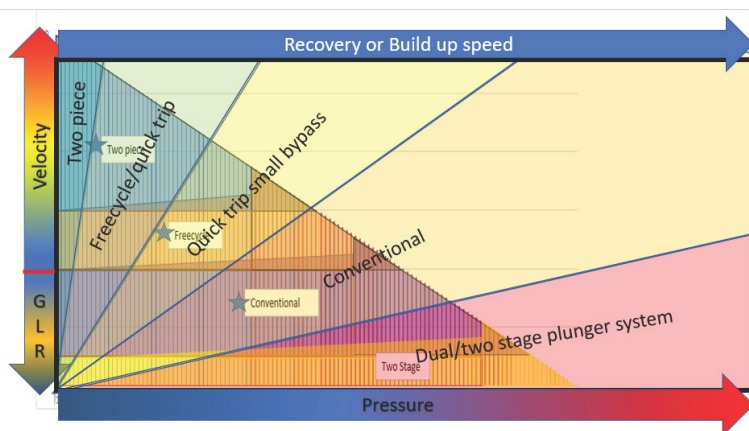
Two Piece plungers are typically used in wells that can maintain a flowing gas rate greater than 60% of well head critical rate or wells requiring short shut in time.

Recommended range 60-150% of critical rate

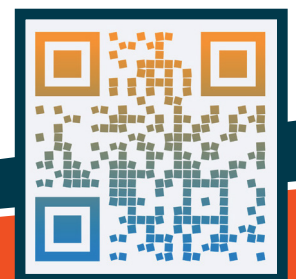
Fluid Volumes 25-200 bbls / Mmcf

Fluid Volumes 4-32 m³ / 28 e3m³

Fast well build up or recovery rate



KAIZENWS.COM



DESIGN

- The Two Piece plunger requires a trip rod plus anvil in the lubricator. A combination of the differential pressure and the rod hold the sleeve, while the ball falls to bottom.
- As the differential drops the sleeve begins to follow. When the sleeve reaches the bumper spring it forms a seal with the ball and returns to surface with a fluid load.
- The Two Piece plunger can be nickel coated for extreme environments to extend wear life and minimize corrosion.
- Works in all standard lubricators designs, requires lubricator trip rod and anvil.
- Available in 60.3mm, 73mm and 88.9mm size.

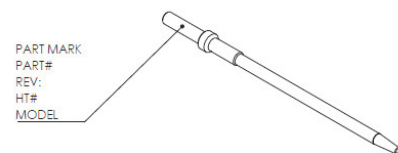
KAIZEN TWO PIECE PLUNGER



ADDED FEATURES

- More trips per days with fast fall times.
- Less fluid load per trip.
- Lower bottom hole flowing pressure.
- Minimum shut in time, 10 seconds per trip.
- Creates no line pressure spikes
- Titanium, Nickle Coated and 4140 Steel Plungers and various sleeve lengths available.
- Zircon Ceramic, Titanium and Cobalt balls

LUBRICATOR TRIP ROD



LUBRICATOR STRIKER ANVIL

